

A stylized world map in a light teal color, centered on the Atlantic Ocean, serves as the background for the slide. The map shows the outlines of the continents.

TRANSPORTATION AND LIFTING

STEAM GENERATOR REMOVAL

STEAM GENERATOR

Transportation

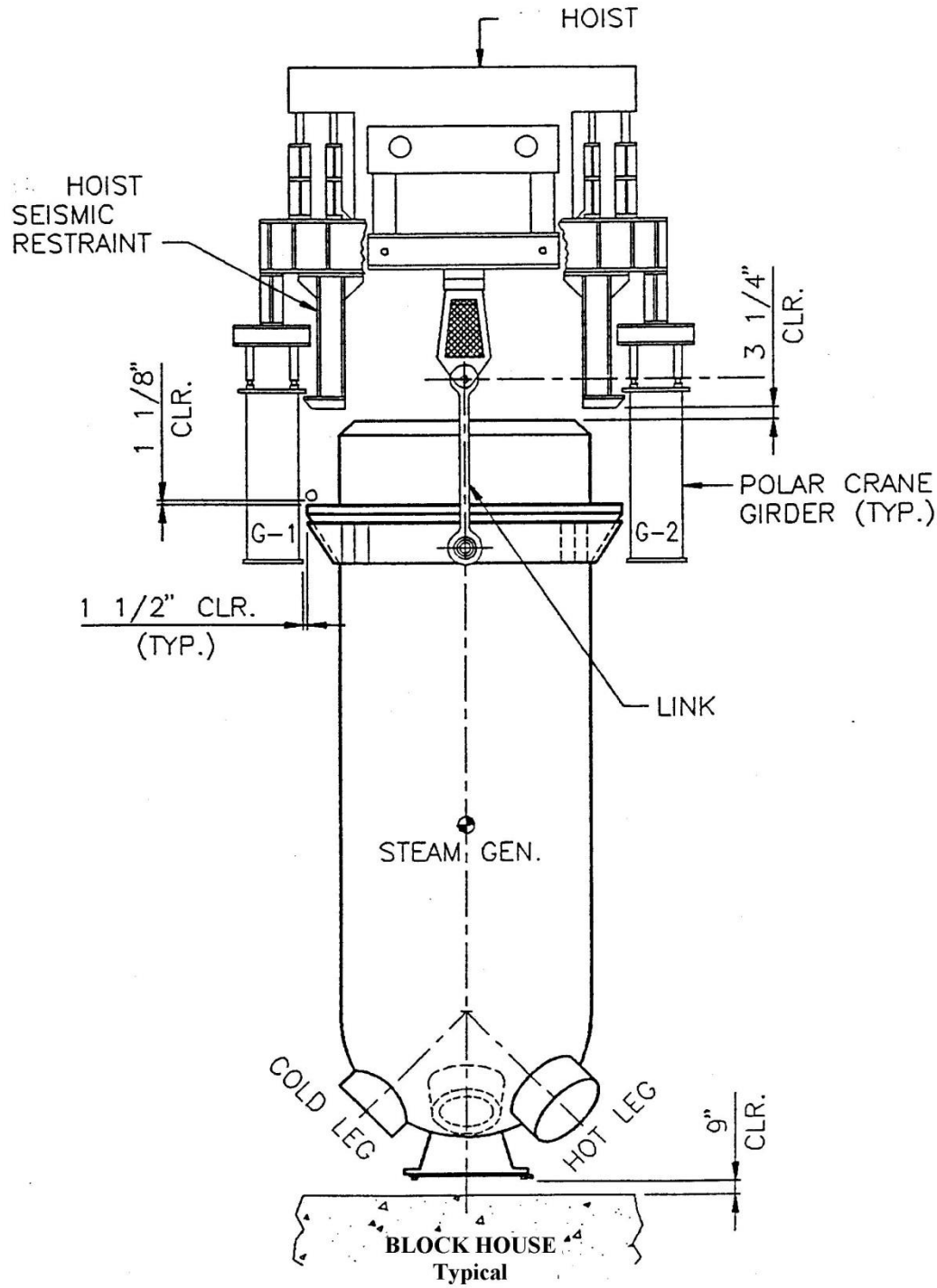
&

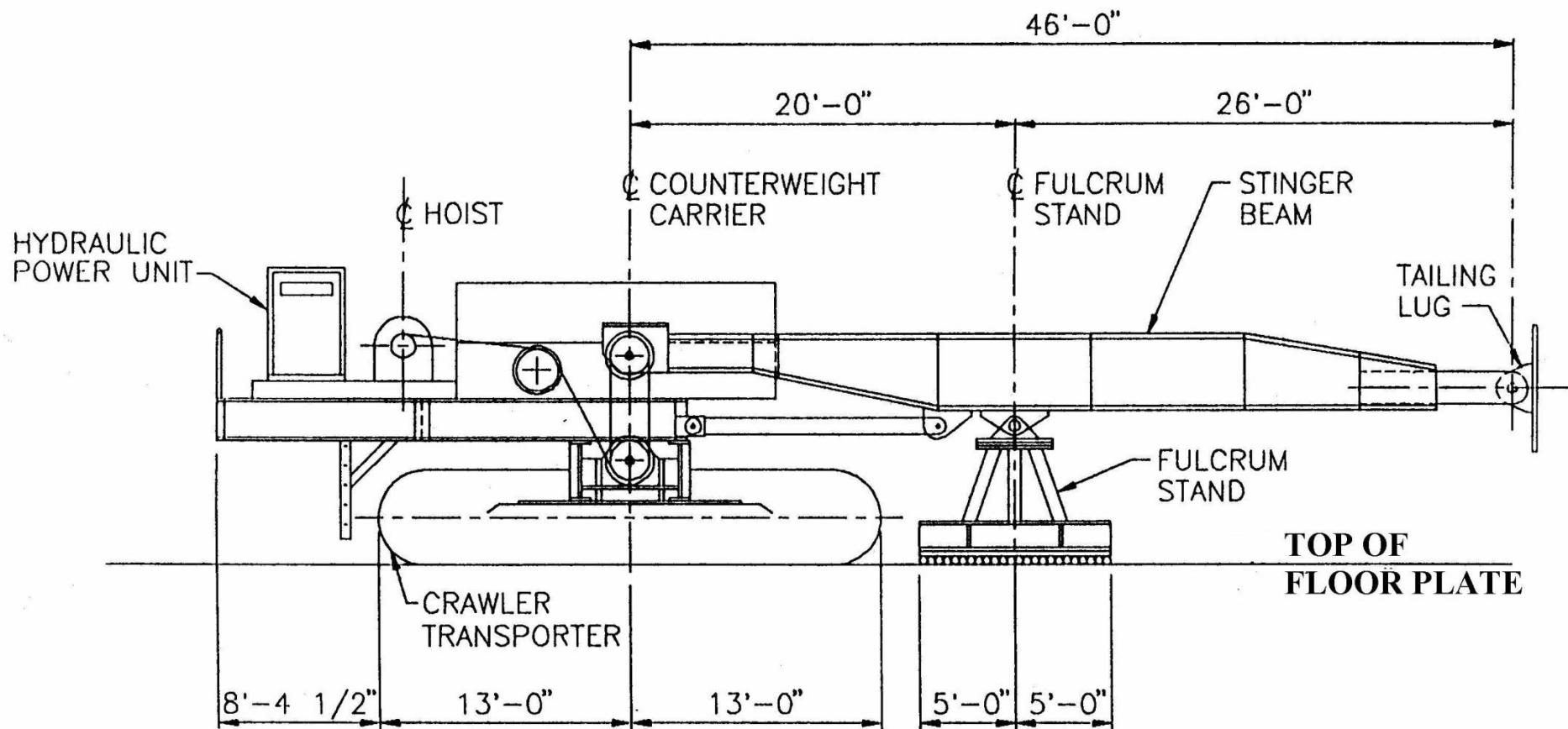
Lifting

5.5 m x 12.5 m x 345 Te

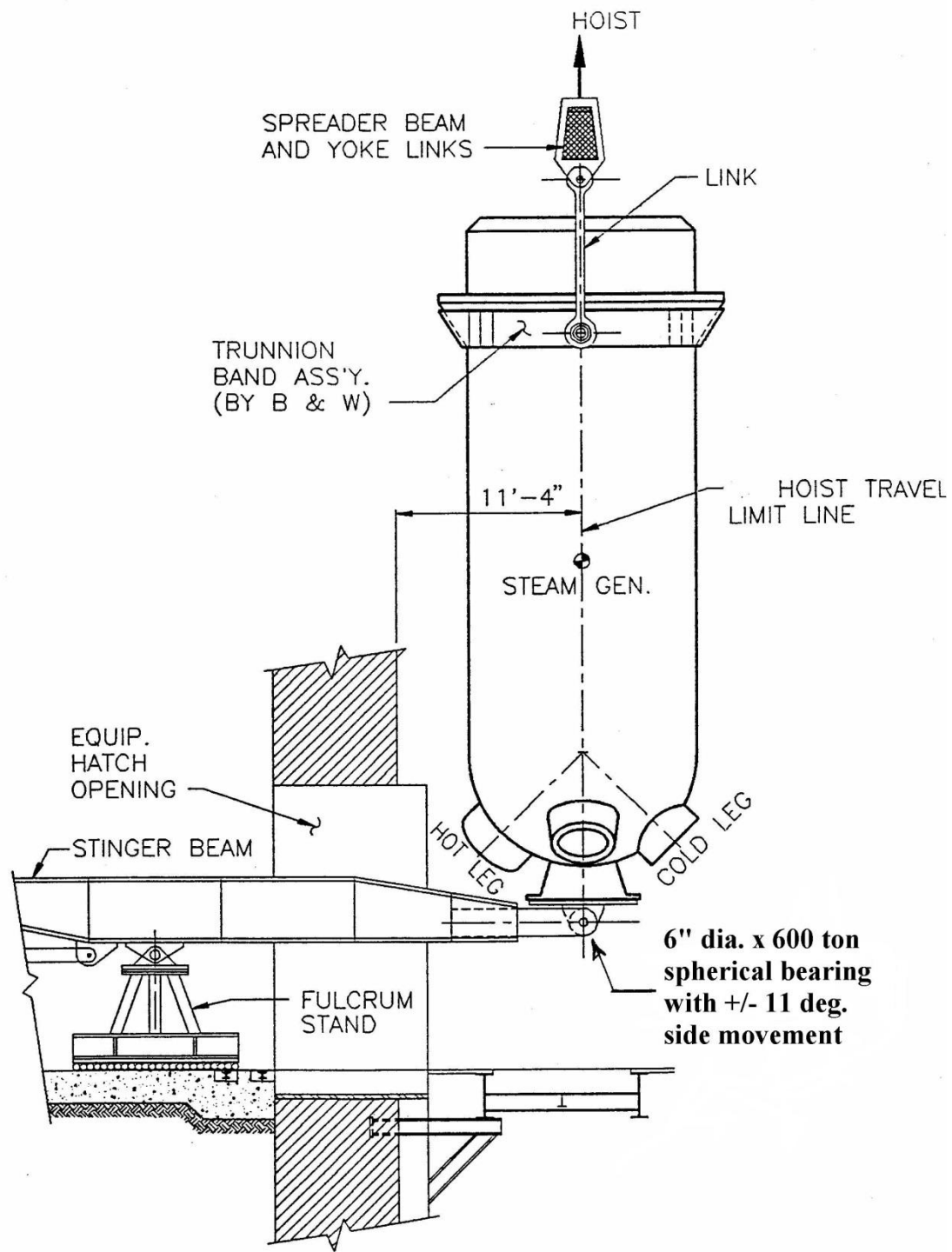
(18' x 41' x 380 tons)

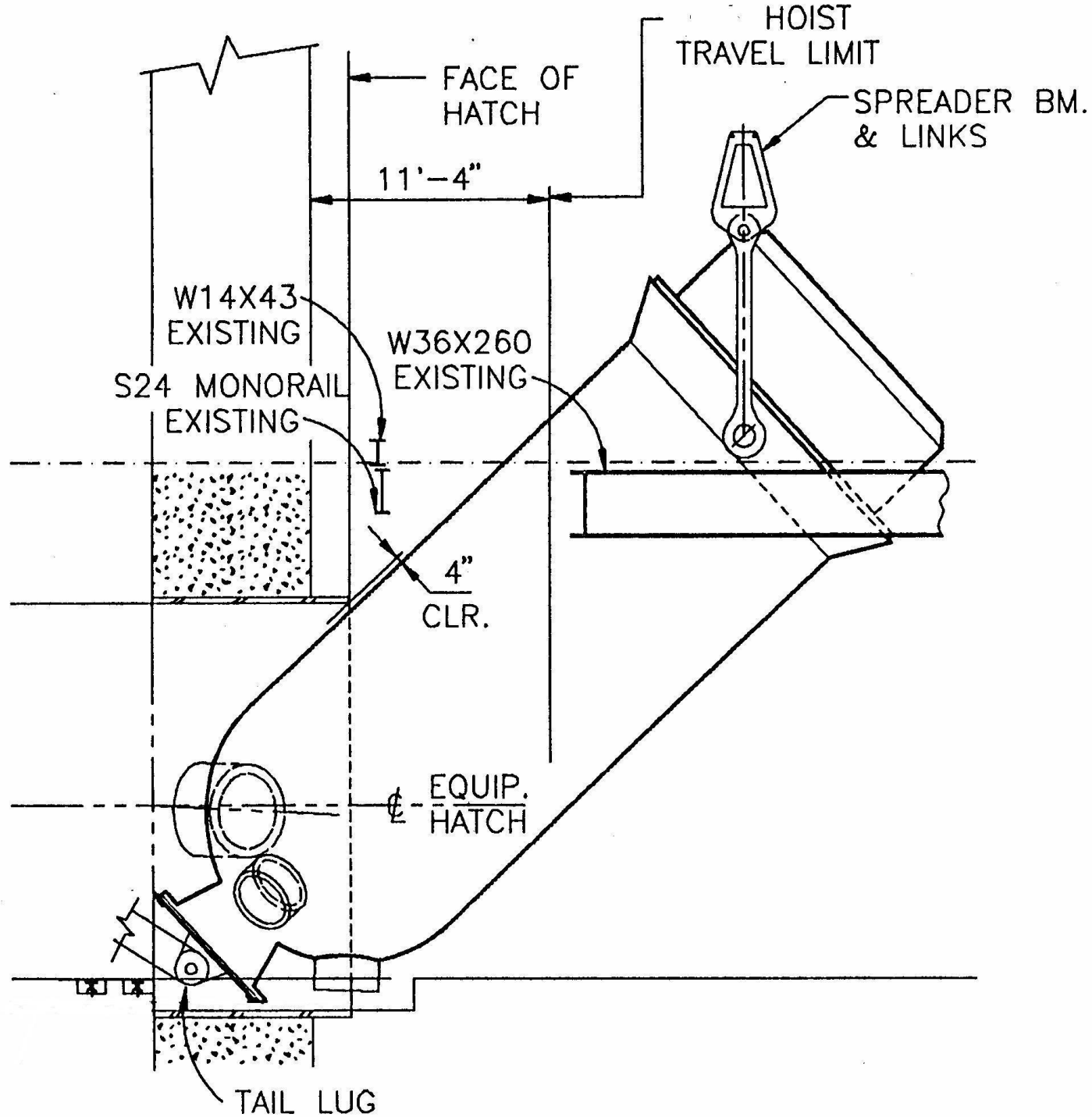
HOW THE REMOVAL OPERATION LOOKED ON THE DRAWINGS

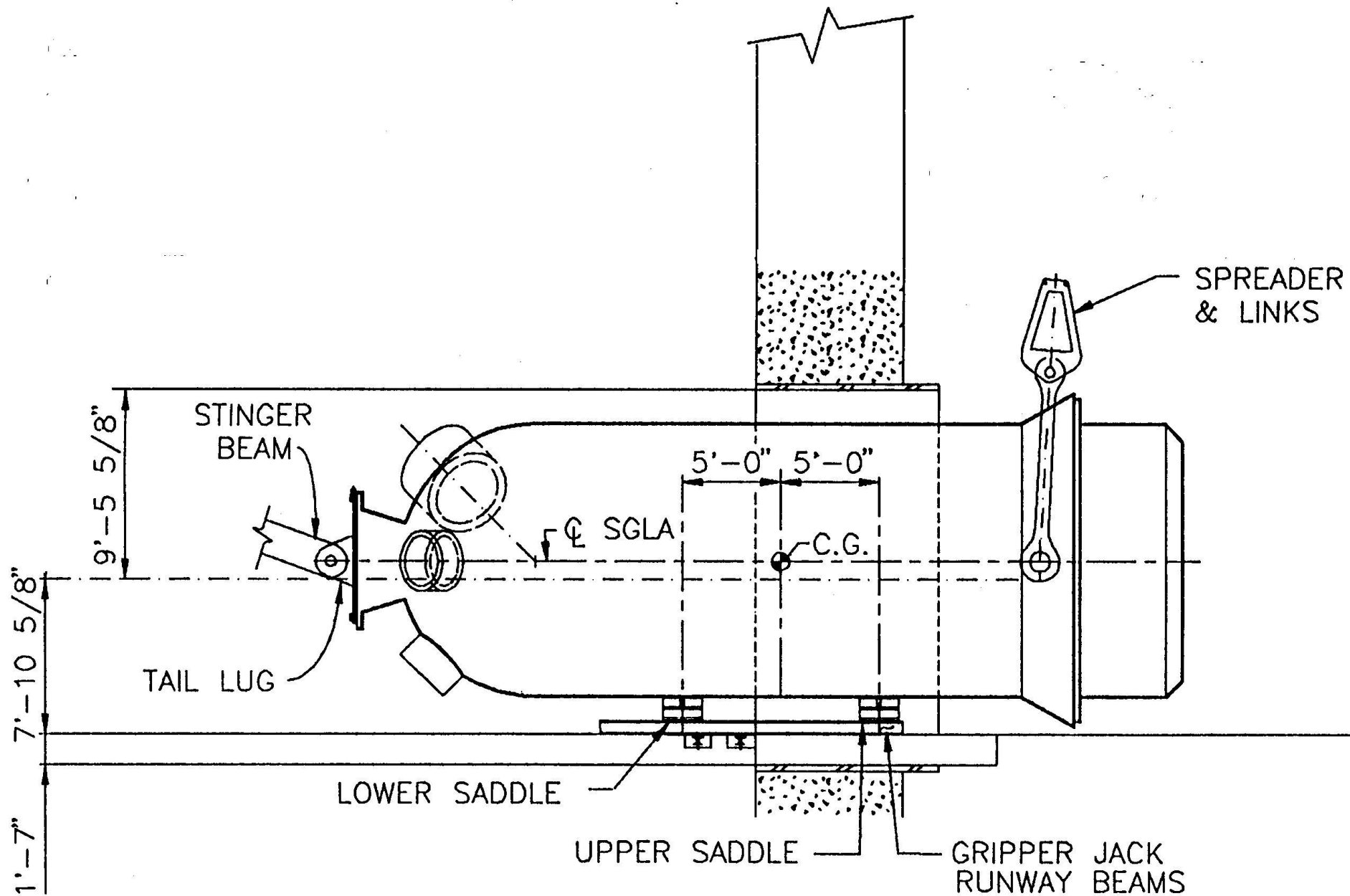


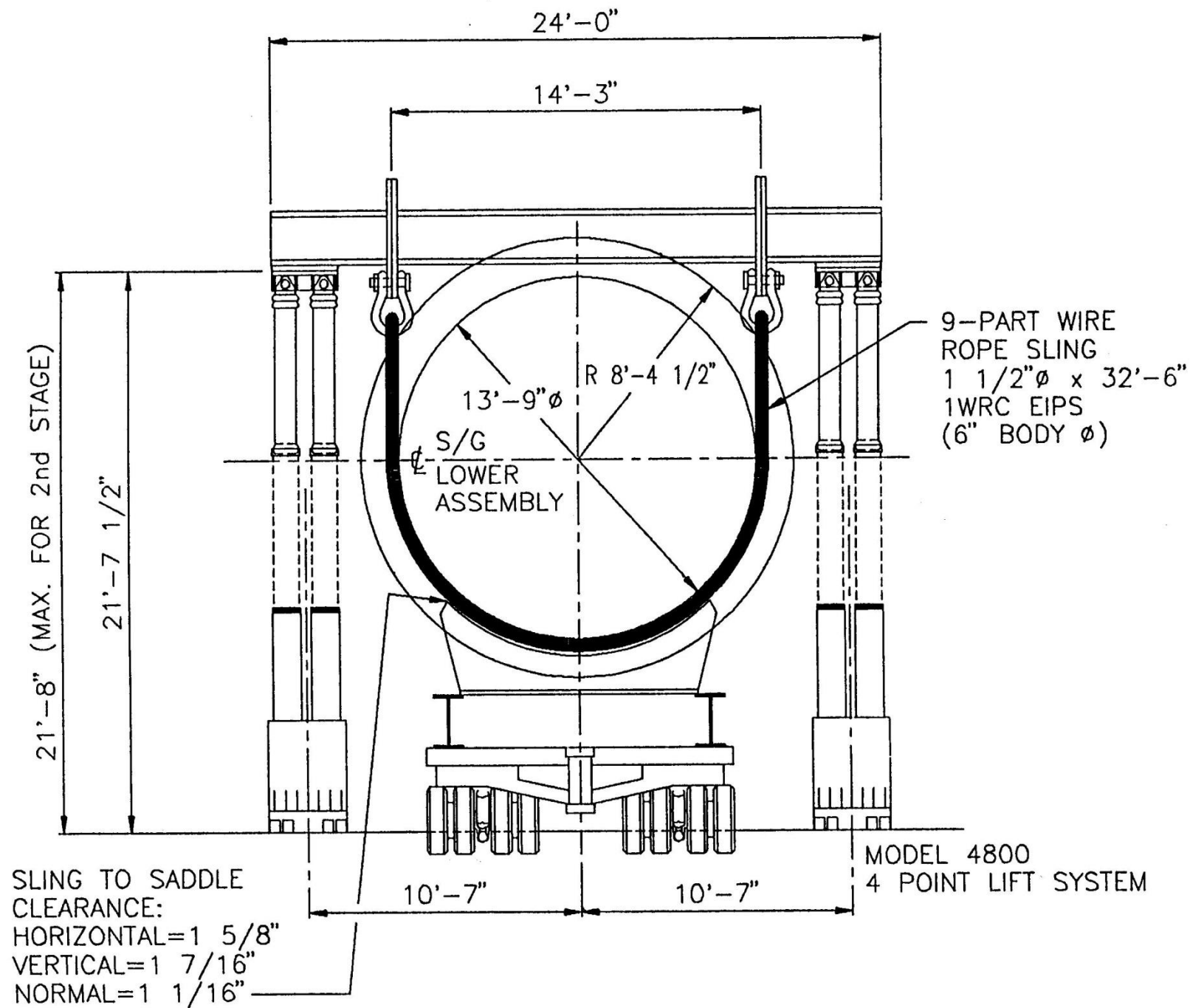


TAILING ASSEMBLY



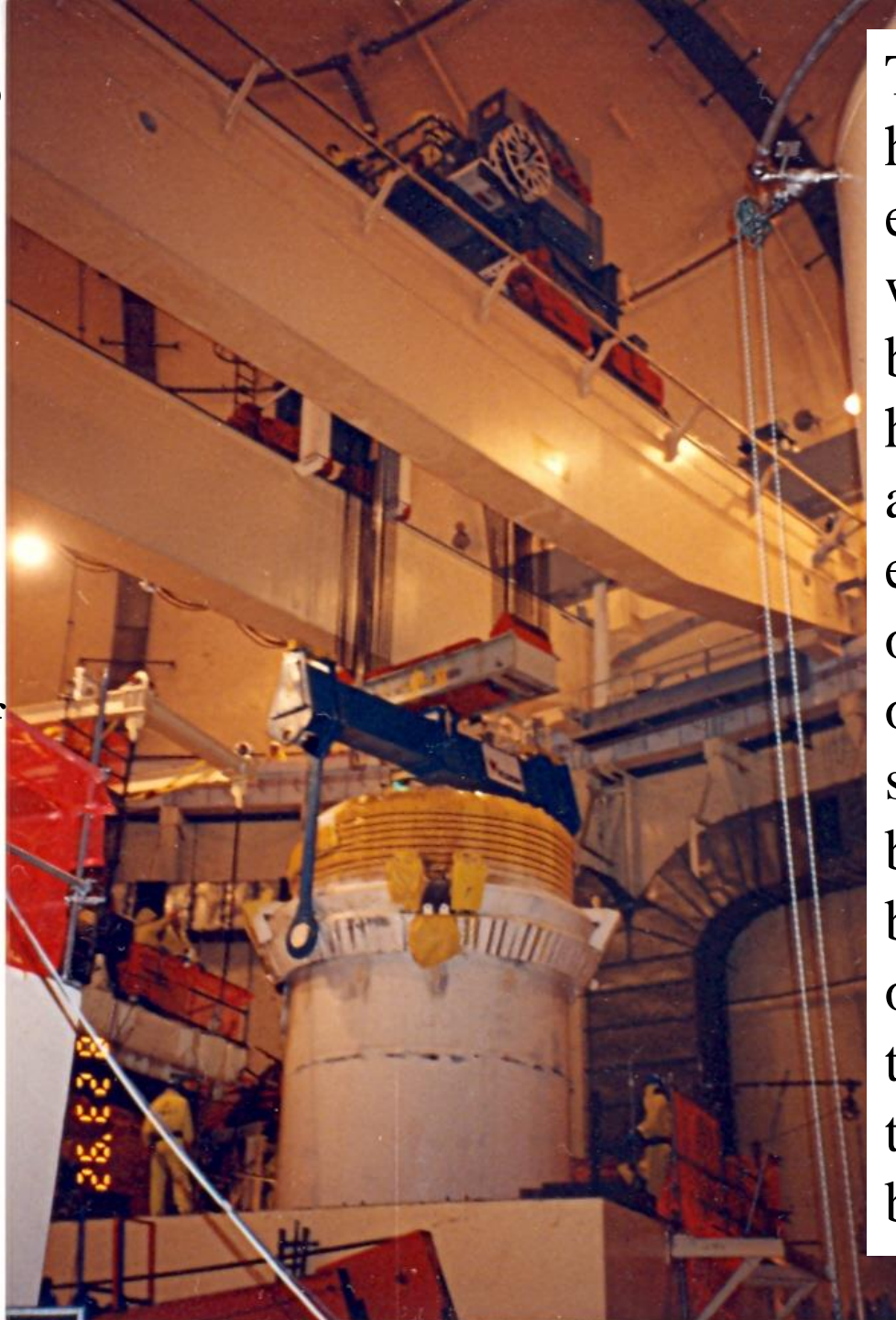




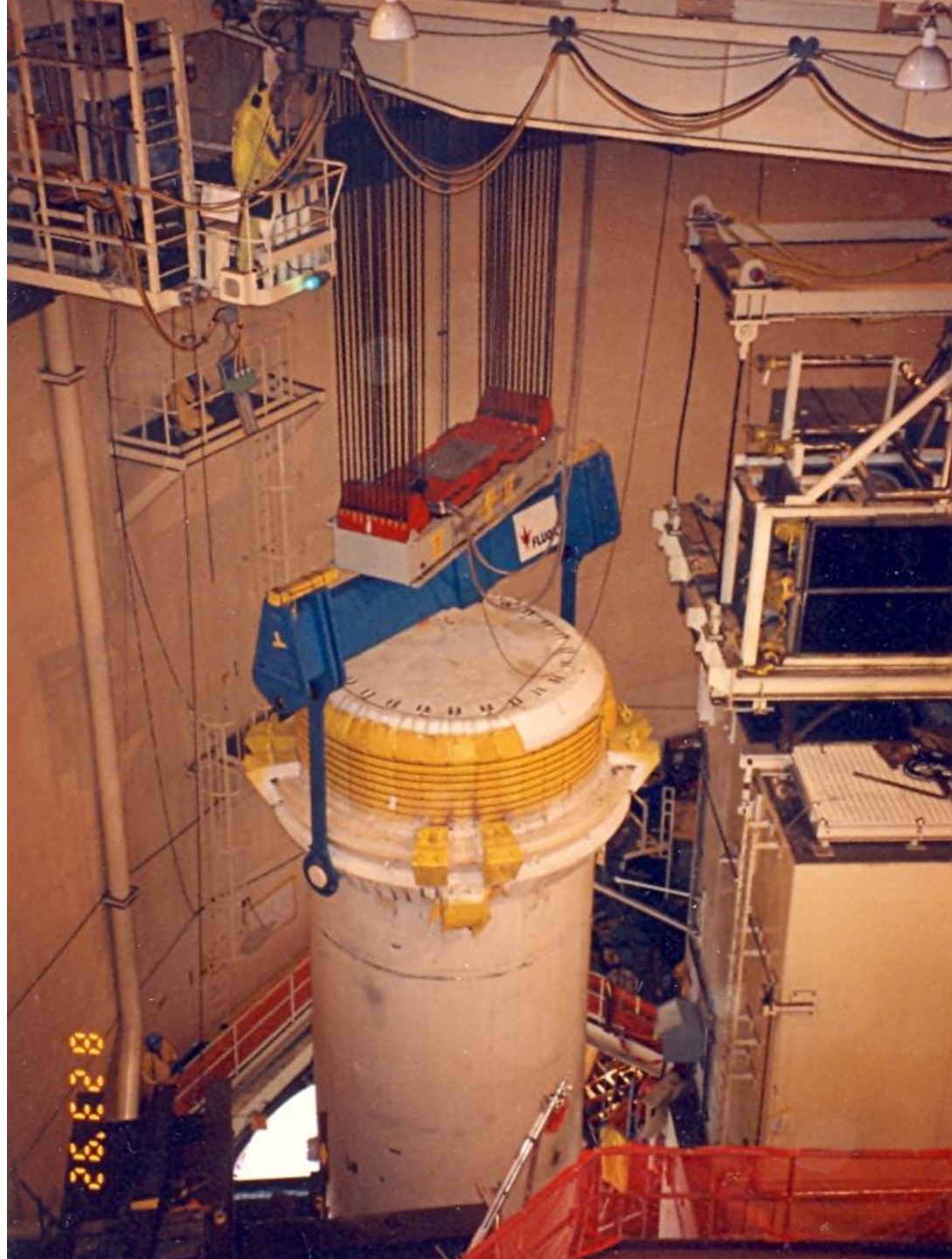


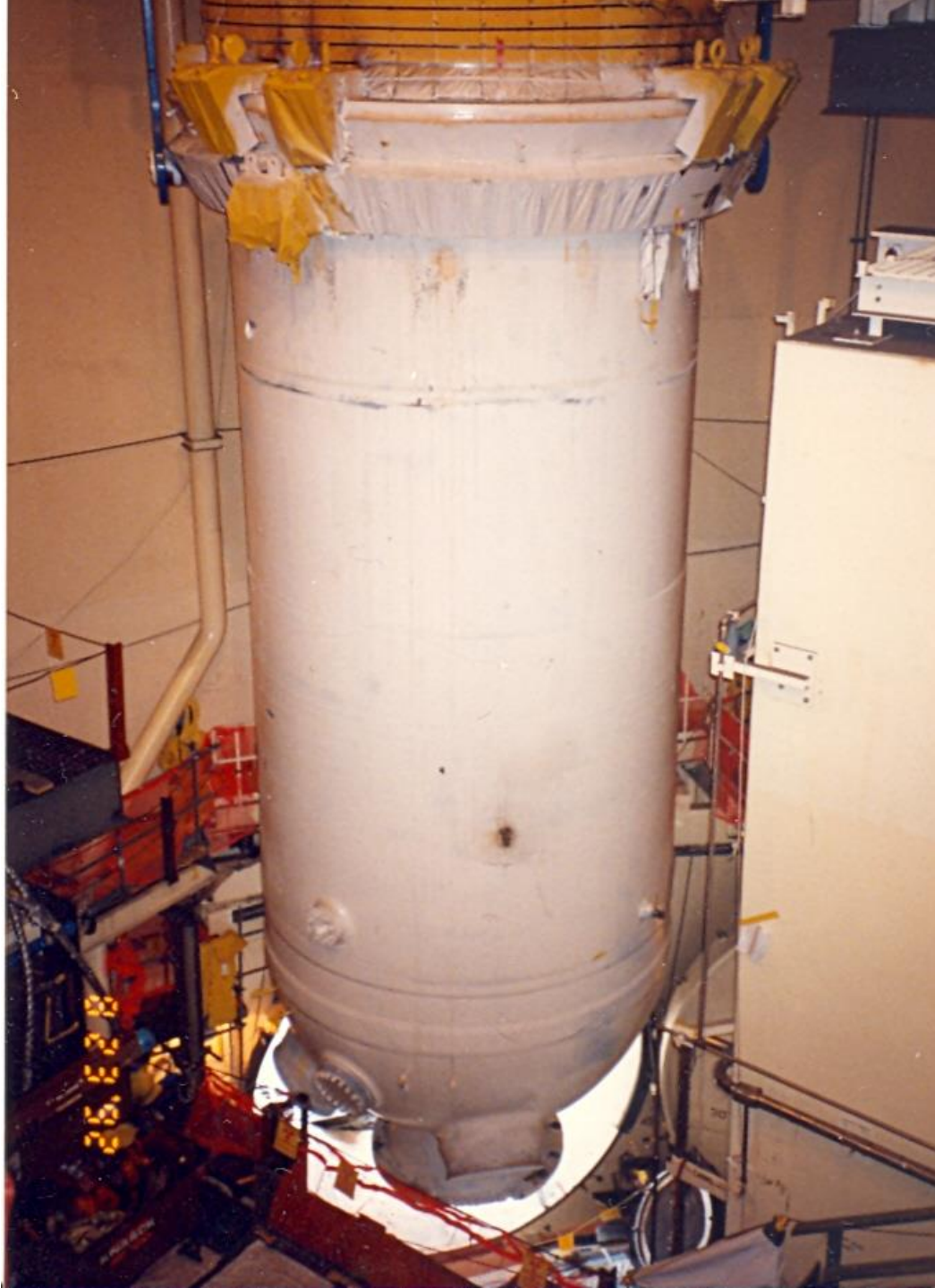
**HOW THE ACTUAL
REMOVAL OPERATION
LOOKED ON THE
PHOTOGRAPHS**

Note in the photo where the Steam Generator Lower Assembly (SGLA) is being lifted out of the block house & that the 650 ton hoist that is running on top of the polar girders has twin falls with 22 parts of 1.13" wire rope each.



The falls are hooked to the ends of a red and white equalizer beam that has a hydraulic swivel at the center. This enables the hoist operator to swivel or rotate the blue spreader bar below it. The blue twin eye bars or links connect the spreader bar to the trunnion bands.





















FINÉ

